



EDUCATION

BEYOND INNOVATION

T O W A R D S S U C C E S S

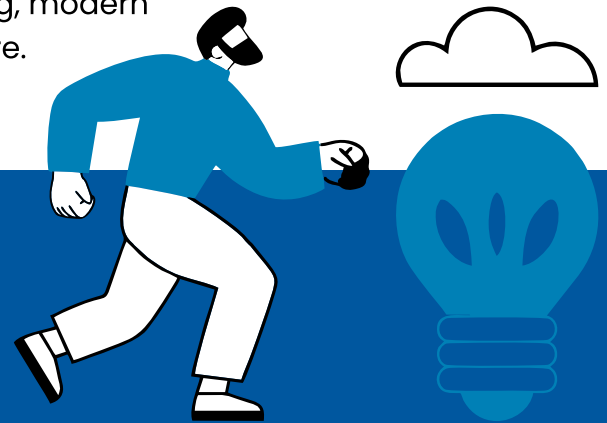
PROSPECTUS

THE FUTURE OF EDUCATION

• LEARN • INNOVATE • LEAD

The world is changing rapidly, and education must evolve to prepare future leaders, innovators, and problem-solvers.

At **BITS**, we blend academic excellence with practical learning, modern infrastructure, and industry exposure to build successful future.





Welcome to

BHARAT GROUP OF INSTITUTIONS

At BITS Sonapat, we don't just educate — we shape future. Founded in 2008 by visionary IITians, BITS has emerged as one of the leading engineering and professional institutions in Haryana, nurturing talent, innovation, and leadership for over a decade. Spread across a lush 20+ acre green campus, BITS provides a vibrant learning environment that empowers thousands of students from across India and abroad to achieve academic excellence and professional success.

From cutting-edge Engineering & Technology programs to dynamic courses in Law, Management, Pharmacy, Nursing, and Allied Health Sciences, BITS offers industry-focused education designed to prepare students for the challenges of tomorrow. With modern laboratories, smart classrooms, experienced faculty, strong industry collaborations, and excellent placement opportunities, students gain the perfect blend of knowledge, skills, and real-world exposure.

At BITS, innovation meets opportunity. Our focus on research, entrepreneurship, personality development, and holistic growth ensures that students evolve into confident professionals and responsible global citizens. Backed by world-class infrastructure, digital learning resources, sports facilities, hostels, and a student-centric campus culture, BITS is more than just a college — it is a launchpad for dreams, careers, and lifelong success.



VISION

To evolve as a globally respected multidisciplinary institution of higher education by integrating excellence in technology, management, healthcare, pharmaceutical sciences, law, and professional studies, fostering innovation, research, ethical leadership, and holistic development to create socially responsible and industry-ready professionals for nation-building and global advancement.



MISSION



1. To provide a learner-centric and technology-enabled academic environment with modern infrastructure, experiential learning, and industry-integrated education across multidisciplinary domains.
2. To impart quality education in Engineering, Management, Healthcare, Nursing, Pharmaceutical Sciences, Law, and allied professional programs through outcome-based learning, practical exposure, and skill development.
3. To foster innovation, research, entrepreneurship, critical thinking, and interdisciplinary collaboration for addressing emerging societal, industrial, healthcare, and technological challenges.
4. To strengthen academic excellence and global competitiveness through qualified faculty, digital transformation, industry-academia collaborations, internships, clinical and industrial exposure, and international partnerships.
5. To inculcate ethics, leadership, social responsibility, constitutional values, sustainability, and lifelong learning for holistic development and responsible citizenship.

OUR LEADERSHIP



Dr. Khushboo Kundu

Dr. Khushboo Kundu is a dedicated medical professional with an MBBS degree and post-graduation in Dermatology from the United Kingdom. With international exposure and a progressive vision, she brings dynamic leadership and a strong commitment to academic excellence, innovation, and holistic student development. Known for her dedication, communication skills, and forward-thinking approach, she strives to create a future-ready academic environment that promotes skill-based learning, confidence, discipline, and meaningful growth for students.



Mr. Vishwa Kundu

Mr. **Vishwa Kundu** represents the new generation of leadership with a dynamic and strategic approach toward growth and innovation. As the youngest member of the Board of Directors at KCC Buildcon Private Limited, he contributes to operational excellence across infrastructure, administration, and healthcare management. A Business Administration graduate and law student, he is recognized for his progressive vision, regulatory understanding, and result-oriented leadership.



Er. Yogender Rathee

Er. **Yogender Rathee** is a distinguished entrepreneur, academician, and industrialist with expertise in manufacturing, education, and healthcare. He owns automobile parts manufacturing units in Haryana and Gujarat and hospitals across Delhi NCR. Holding B.Tech and M.Tech degrees in Mechanical Engineering, he is known for his strong administrative experience and industry-oriented approach.

OUR PROGRAMMES

B.Tech | B. Tech. (LEET)

- Computer Science & Engineering
- Mechanical Engineering
- Civil Engineering
- Electrical Engineering

M.Tech.

- Computer Science & Engineering
- Civil Engineering

BCA | BBA | MBA
LLB | BA LLB | BBA LLB
ANM | GNM

D. Pharmacy
B. Pharmacy
B. Pharmacy (LEET)

Approval & Recognition



B.Tech.

Computer Science & Engineering

4 Years

B.Tech. in Computer Science and Engineering is a highly sought-after undergraduate program that focuses on computer systems, software development, artificial intelligence, and data science. The course equips students with strong programming skills, problem-solving abilities, and knowledge of emerging technologies. Graduates are well-prepared for careers in IT companies, startups, and global tech organizations.

ELIGIBILITY

12th Pass With Aggregate 45% Marks & PCM/PCB As Compulsory Subject(40 % For Reserved Category)

Why Choose B.Tech. (CSE)

- High-paying career opportunities in IT industry
- Growing demand in AI, Data Science, and Cyber Security
- Opportunities in startups and global tech companies
- Strong placement potential
- Future-proof career with global demand



B.Tech.

Mechanical Engineering

4 Years

B.Tech. in Mechanical Engineering is a core engineering discipline that deals with the design, analysis, and manufacturing of mechanical systems. The program covers subjects like thermodynamics, machine design, and production engineering. Students gain practical exposure through workshops and industrial training, preparing them for careers in manufacturing, automotive, and industrial sectors.

ELIGIBILITY

12th Pass With Aggregate 45% Marks & PCM/PCB As Compulsory Subject(40 % For Reserved Category)

Why Choose B.Tech. (ME)

- Core engineering field with vast industry applications
- Opportunities in manufacturing and automobile sectors
- Strong demand in industrial and production sectors
- Career options in government and PSU jobs
- Scope in robotics and automation industries



B.Tech.

Civil Engineering

4 Years

B.Tech. in Civil Engineering focuses on the planning, design, and construction of infrastructure such as buildings, roads, bridges, and dams. The course provides knowledge in structural engineering, environmental engineering, and construction management. Graduates play a crucial role in nation-building through infrastructure development projects.

ELIGIBILITY

12th Pass With Aggregate 45% Marks & PCM/PCB As Compulsory Subject(40 % For Reserved Category)

Why Choose B.Tech. (CE)

- Essential role in infrastructure and development projects
- High demand in construction and real estate sectors
- Government job opportunities in PWD and CPWD
- Scope in urban planning and smart cities
- Opportunities for self-employment and contracting



B.Tech.

Electrical Engineering

4 Years

B.Tech. in Electrical Engineering deals with the study of electrical systems, power generation, transmission, and control systems. The course equips students with knowledge of modern electrical technologies, renewable energy systems, and automation. Graduates are highly valued in power sectors, industries, and government organizations.

ELIGIBILITY

12th Pass With Aggregate 45% Marks & PCM/PCB As Compulsory Subject(40 % For Reserved Category)

Why Choose B.Tech. (EE)

- Growing demand in power and energy sector
- Opportunities in renewable energy and automation
- Core engineering branch with stable career growth
- Government job opportunities in electricity boards
- Scope in industrial and manufacturing sectors



B.Tech. (LEET)

Computer Science & Engineering

3 Years

B.Tech. (LEET) is a lateral entry program that allows diploma holders to directly enter the second year of engineering. The course is designed to enhance technical knowledge and skills, enabling students to specialize in their chosen engineering field. It provides strong career growth opportunities in various industries.

ELIGIBILITY

45% Aggregate In 3-Year Diploma In Engineering In any stream
(40 % For Reserved Category)

Why Choose B.Tech. - CSE (LEET)

- Direct admission to 2nd year reduces overall study duration
- Perfect pathway for diploma students to advance their technical expertise
- Practical and industry-focused learning approach
- High demand for skilled CSE professionals in IT sectors
- Excellent career opportunities with attractive salary packages



B.Tech. (LEET)

Mechanical Engineering

3 Years

B.Tech. (LEET) is a lateral entry program that allows diploma holders to directly enter the second year of engineering. The course is designed to enhance technical knowledge and skills, enabling students to specialize in their chosen engineering field. It provides strong career growth opportunities in various industries.

ELIGIBILITY

45% Aggregate In 3-Year Diploma In Engineering In any stream
(40 % For Reserved Category)

Why Choose B.Tech.- ME (LEET)

- Fast-track entry directly into 2nd year engineering
- Perfect pathway for diploma students to advance careers
- Practical and industry-focused technical learning
- Excellent scope in manufacturing & core industries
- Better placement opportunities with higher earning potential



B.Tech. (LEET)

Civil Engineering

3 Years

B.Tech. (LEET) is a lateral entry program that allows diploma holders to directly enter the second year of engineering. The course is designed to enhance technical knowledge and skills, enabling students to specialize in their chosen engineering field. It provides strong career growth opportunities in various industries.

ELIGIBILITY

45% Aggregate In 3-Year Diploma In Engineering In any stream
(40% For Reserved Category)

Why Choose B.Tech. - CE (LEET)

- Direct admission into 2nd year after diploma
- Enhances practical and technical engineering skills
- Focus on construction, design & infrastructure development
- Industry-based curriculum with modern learning approach
- Excellent career opportunities in government & private sectors



B.Tech. (LEET)

Electrical Engineering **3 Years**

B.Tech. (LEET) is a lateral entry program that allows diploma holders to directly enter the second year of engineering. The course is designed to enhance technical knowledge and skills, enabling students to specialize in their chosen engineering field. It provides strong career growth opportunities in various industries.

ELIGIBILITY

45% Aggregate In 3-Year Diploma In Engineering In any stream
(40% For Reserved Category)

Why Choose B.Tech. - EE (LEET)

- Direct 2nd year admission
- Best for diploma holders
- Improves technical skills
- Industry-oriented curriculum
- Better career & placement opportunities



M.Tech.

Computer Science & Engineering

2 Years

M.Tech. in Computer Science and Engineering is a postgraduate program focused on advanced computing technologies, artificial intelligence, machine learning, and software systems. The course emphasizes research, innovation, and specialized technical skills, preparing students for senior roles in the IT industry and academic careers.

ELIGIBILITY

B.E/B.Tech Pass With 50% Marks

Why Choose M.Tech. (CSE)

- Deep knowledge in modern technologies and software development
- Better career growth with high-paying job opportunities
- Strong scope in research, innovation, and development
- Opportunities in teaching and technical leadership roles
- High demand in AI, Cyber Security, and Data Analytics



M.Tech.

Civil Engineering

2 Years

M.Tech. in Civil Engineering is an advanced program that focuses on structural design, geotechnical engineering, and infrastructure development. The course enhances analytical and research skills, enabling graduates to work on large-scale construction projects, consultancy, and academic roles.

ELIGIBILITY

B.E/B.Tech Pass With 50% Marks

Why Choose M.Tech. (CE)

- Advanced expertise in structural and infrastructure design
- Opportunities in large-scale construction projects
- High demand for specialized engineers
- Career in research, consultancy, and academics
- Leadership roles in project management



Bachelor of Computer Applications (BCA)

3 Years

Bachelor of Computer Applications (BCA) is an undergraduate program focused on computer applications, software development, and IT systems. The course provides practical and theoretical knowledge in programming, databases, and networking, making students industry-ready for IT careers.

ELIGIBILITY

12th Pass With Aggregate 50% Marks in Any Stream
(45% For SC/OBC/PH)

Why Choose BCA

- Strong foundation in IT and software development
- Growing demand in tech industry
- Opportunities in web and app development
- Gateway to MCA and higher studies
- Career in startups and IT companies



Bachelor of Business Administration (BBA)

3 Years

Bachelor of Business Administration (BBA) is an undergraduate program that provides a strong foundation in business management, marketing, finance, and human resources. The course develops leadership, communication, and decision-making skills, preparing students for corporate careers and entrepreneurship.

ELIGIBILITY

12th Pass With Aggregate 50% Marks In Any Stream

Why Choose BBA

- Strong foundation in business and management
- Early exposure to corporate environment
- Opportunities in marketing, HR, and finance
- Ideal for entrepreneurship
- Gateway to MBA and higher studies



MBA

HR, Finance, Marketing, IBM, Operations, MIS, PPM

2 Years

Master of Business Administration (MBA) is a postgraduate program designed to develop managerial and leadership skills. With specializations in HR, Finance, Marketing, Operations, and International Business, the course prepares students for high-level roles in corporate sectors and global organizations.

ELIGIBILITY

Graduation With 50% Marks In Any Stream (45% For SC/OBC/PH)

Why Choose MBA

- High demand for management professionals
- Leadership and managerial skill development
- Excellent salary packages
- Specialization options (HR, Finance, Marketing)
- Global career opportunities



LAW

LLB Honours **3 Years**

LL.B (Hons) is a professional law degree that provides in-depth knowledge of legal systems, procedures, and practices. The course prepares students for careers in advocacy, judiciary, corporate law, and legal consultancy.

ELIGIBILITY

Bachelor's Degree with a minimum of 45% marks in aggregate, or 40% with a Master's degree.

Why Choose LLB Hons

- Professional degree for legal practice
- Opportunities in judiciary and advocacy
- Career in corporate legal sector
- High respect and social impact profession
- Pathway to judiciary exams and civil services



LAW

BBA LLB Honours

5 Years

BBA LLB (Hons) integrates business management and legal education, preparing students for corporate legal careers. The course focuses on business laws, corporate governance, and legal practices, offering excellent opportunities in law firms and corporate sectors.

ELIGIBILITY

Passed 10+2 With At Least 45% Aggregate (42.75% For Haryana SC/ST/Disabled) from a recognized board

Why Choose BBA LLB Hons

- Combination of business and legal education
- High demand in corporate sector
- Career opportunities in corporate law firms
- Strong foundation in business laws
- Scope in compliance and legal advisory roles



LAW

BA LLB Honours

5 Years

BA LLB (Hons) is a five-year integrated law program that combines humanities subjects with legal education. The course provides a strong foundation in constitutional law, criminal law, and civil law, along with practical training through moot courts and internships.

ELIGIBILITY

Senior Secondary Examination (10+2) With At Least 45% Marks (42.75% For SC/ST/Blind/Differently Abled Of Haryana) From A Recognized Board.

Why Choose BALLB Hons

- Integrated course saves time (5-year program)
- Strong foundation in law and humanities
- Opportunities in judiciary and legal practice
- Career in corporate law and civil services
- Practical exposure through moot courts



Nursing

ANM

2 Years

ANM (Auxiliary Nursing and Midwifery) is a diploma course focused on basic healthcare services, especially in rural and community settings. The program trains students in primary medical care, maternal health, and child care. It plays a vital role in strengthening public health systems by preparing healthcare workers for grassroots-level services.

ELIGIBILITY

12th Pass With Aggregate 40% Marks In Any Stream.

The Maximum Age For Admission Is 35 Years

Why Choose ANM

- Ideal for careers in community and rural healthcare
- Quick entry into healthcare sector
- Strong demand in government health programs
- Opportunity to work with NGOs and public health missions
- Focus on maternal and child healthcare



Nursing

GNM

3 Years

GNM (General Nursing and Midwifery) is a diploma program that prepares students to become skilled nursing professionals. The course emphasizes patient care, clinical practices, and hospital training. Students develop hands-on experience in various healthcare settings, including hospitals and community health centers, making them capable of delivering quality healthcare services.

ELIGIBILITY

12th Pass With Aggregate 40% Marks & English As A Compulsory Subject In Any Stream. The Maximum Age For Admission Is 35 Years

WHY CHOOSE GNM

- High demand for trained nursing professionals
- Strong career opportunities in hospitals and healthcare centers
- Hands-on clinical training from early stage
- Opportunities in government and private sector
- Pathway to advanced nursing education



Pharmacy

Diploma In Pharmacy

2 Years

D.Pharmacy (Diploma in Pharmacy) is a foundational program designed for students who wish to build a career in the pharmaceutical and healthcare sector. The course focuses on basic pharmaceutical sciences, drug formulation, dispensing practices, and patient care. Students gain practical knowledge through lab work and hospital training, preparing them to work as licensed pharmacists in retail and clinical settings.

ELIGIBILITY

12th Pass With Aggregate 40% Marks in PCM/PCB & English As Compulsory Subject

Why Choose D.Pharmacy

- Quick entry into the healthcare and pharmaceutical sector
- High demand for licensed pharmacists
- Opportunities in hospitals, clinics, and retail pharmacies
- Strong foundation for higher studies like B.Pharmacy
- Government job opportunities in health services



Pharmacy

Bachelor Of Pharmacy

4 Years

Bachelor of Pharmacy (B.Pharmacy) is an undergraduate program that focuses on drug development, pharmaceutical chemistry, pharmacology, and healthcare systems. The course is designed to provide in-depth knowledge of medicines, their effects, and manufacturing processes. With a strong emphasis on practical training and research, graduates can pursue careers in pharmaceutical industries, clinical research, and regulatory sectors.

ELIGIBILITY

12th Pass With Aggregate 50% Marks In PCM/PCB
& English As Compulsory Subject

Why Choose B.Pharmacy

- Wide career opportunities in pharmaceutical and healthcare sectors
- Excellent job demand in India as well as international markets
- Practical exposure through laboratory work and drug formulation
- Strong career growth in research, quality control, and production
- Great opportunities for higher education and professional advancement



Pharmacy

Bachelor of Pharmacy (LEET)

3 Years

Bachelor of Pharmacy (B.Pharmacy) is an undergraduate program that focuses on drug development, pharmaceutical chemistry, pharmacology, and healthcare systems. The course is designed to provide in-depth knowledge of medicines, their effects, and manufacturing processes. With a strong emphasis on practical training and research, graduates can pursue careers in pharmaceutical industries, clinical research, and regulatory sectors.

ELIGIBILITY

D. Pharmacy Course With Aggregate 50% Marks From An Institution Approved By The Pharmacy Council Of India

Why Choose B.Pharmacy-Leet

- Diverse career opportunities in pharma, research, and healthcare
- Strong industry demand in India and abroad
- Hands-on training in labs and drug development
- Career scope in clinical research and production
- Opportunities for higher studies (M.Pharm, MBA)



SCHOLARSHIP



Sr.No.	Course / Programme	Criteria Type	Eligibility	Scholarship / Tuition Fee Waiver
1	B.Tech/BBA/BCA/BA LLB/BBA LLB/B.Pharma/ D.Pharma/ANM/GNM/B.Sc Nursing*	10+2 Percentage	Above 90%	50%
			80- 90%	35%
			70-80%	25%
			60-70%	15%
2	B.Tech (LEET)/B.Pharma (LEET)	Diploma Percentage	Above 90%	50%
			80-90%	35%
			70-80%	25%
			60-70%	15%
3	MBA/M.Tech./LLB	Graduation Percentage	Above 90%	50%
			80- 90%	35%
			70-80%	25%
			60-70%	15 %
4	JEE Rank		Below 70000	90%
			70000-100000	50%
5	CLAT Rank		Below 7000	90%
			7000-10000	50%
6	NEET Rank		Below 30,000	90%
			30,000-50,000	50%
7	Sports	International Level Winner		100%
		National Level		50%
		District / State Level		20% / 30%
8	Single Girl Child/Sibling/Single Parent / Head Boy or Girl			30%
9	Wards of Defence Martyrs / War Injured			50%

Terms and conditions for scholarship for the next academic Year.

- Attendance must be maintained as per university norms.
- Students with a reappear record in any semester forfeit scholarship eligibility and will be liable to pay full fee amount for the remaining period.

Our Luminaries



Deep Mani



Diljit Dosanjh



Jassi Gill



Babbal Rai

Our Luminaries



Master Saleem



A Bazz



Dr. Kumar
Vishwash



Shri Sakshi
Maharaj

CAMPUS LIFE

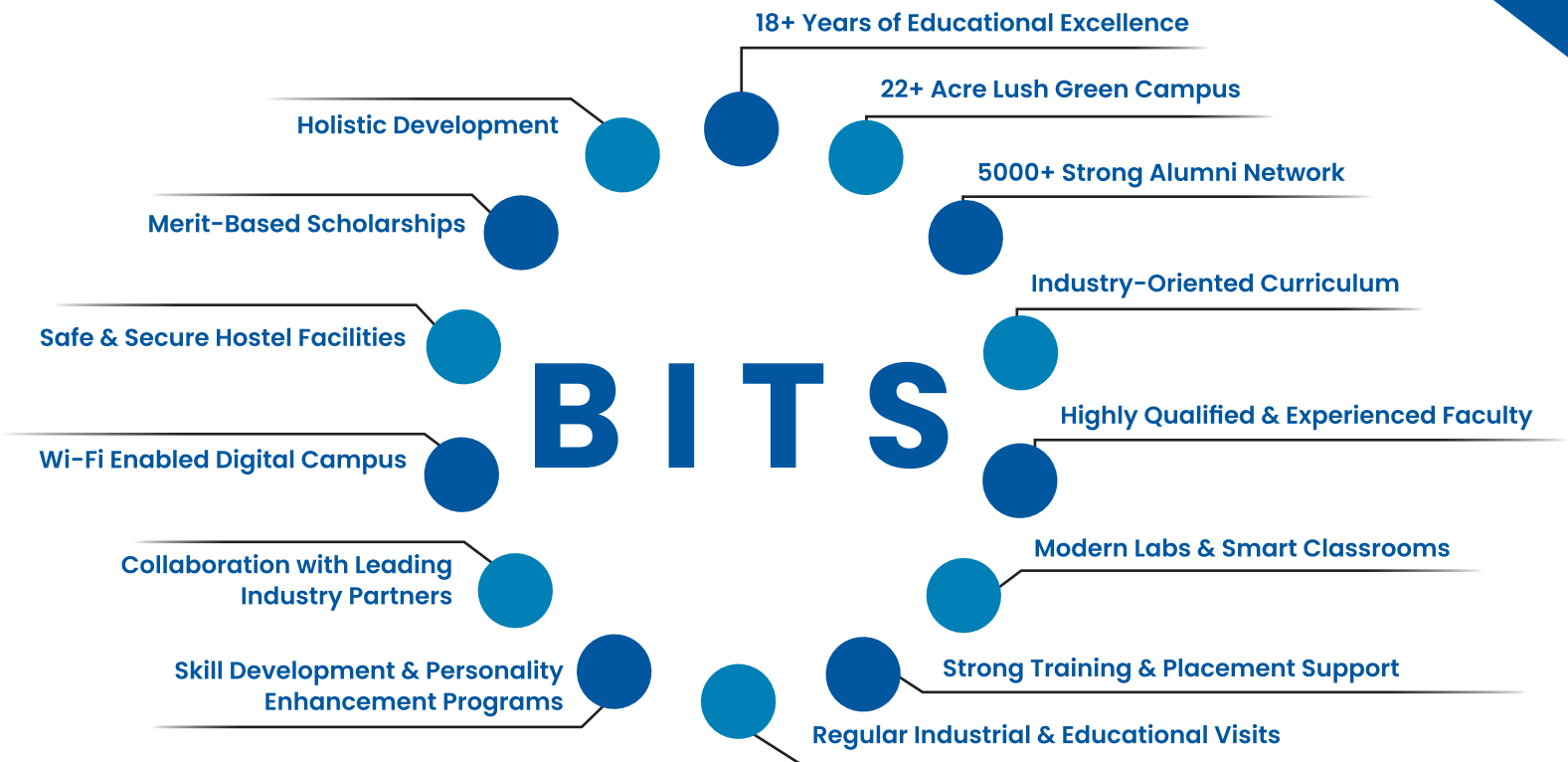








Why Choose BITS



Salient Features



Transport



Hostel



Sports



Advance Labs



Library



Medical Facility



Cafeteria

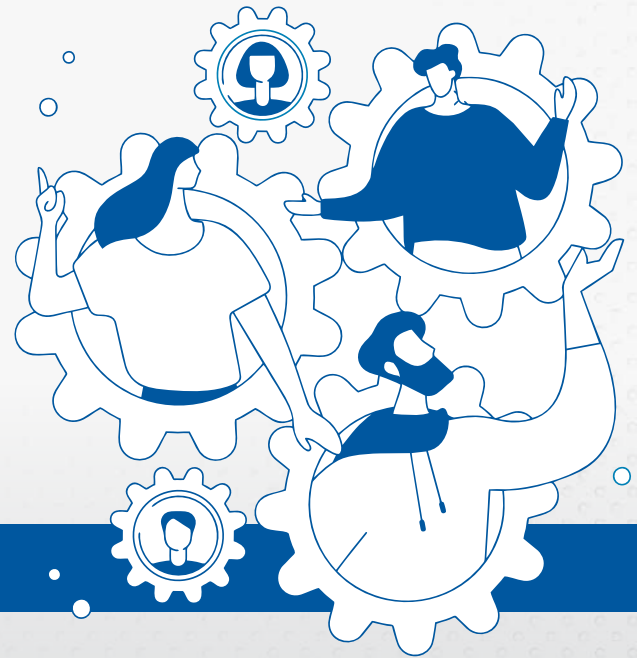


Yoga



Training & Placement

OUR RECRUITERS



 KCC Buildcon PVT. LTD. <i>Dedication to Quality</i>	RANBAXY	make my trip	COSTA COFFEE	 MONTE CARLO It's the way you make me feel
 LOTUS	 punjab national bank <i>...the name you can BANK upon!</i>	Cipla	KAZO	 JK WHITE CEMENT
 PATASHO DEVELOPERS	Panasonic	METRO	 JINDAL STEEL & POWER	 SUN PHARMA
	TATA MOTORS	 Castrol	SportKing	 JINDAL
	 DAIKIN	HCLSoftware	Infosys	 Lorford
	IFB	 care HEALTH INSURANCE	 ANCHOR	 SAMRAT CLADGE The son of Chhizer
	 यूको बैंक UCO BANK (यूको बैंक का समूह) (A part of India's banknet) समान आपके विकासकर्ता (Honour's Your Trust)	hindware	spykar	 RAK ESKIMEN
	 Muthoot Finance	OPPLE LIGHTING.	 दैनिक भास्कर	

CELLS AND COMMITTEES



- » Internal Complaint Committee
- » Student Grievance Redressal Committee (SGRC)
- » SC/ST Cell
- » Equal Opportunity Cell
- » Anti Ragging Committee
- » Sports Committee
- » Cultural Committee
- » Swayam and MOOC Cell
- » Training & Placement cell



BITS

— **BEYOND INNOVATION TOWARDS SUCCESS** —



Scan to apply



Build

Your Future at

BEYOND INNOVATION, TOWARDS SUCCESS

BITS

✉ Bits.sonepat@gmail.com | www.bits.edu.in



Scan to Apply

 **9053555741/42/43**

 Sonepat-Gohana Highway, Near Mohana Police Station, Sonepat-131025